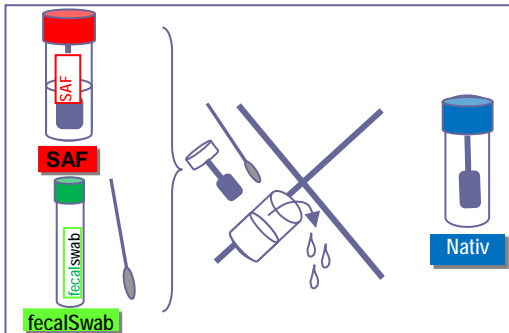


STOOL COLLECTION



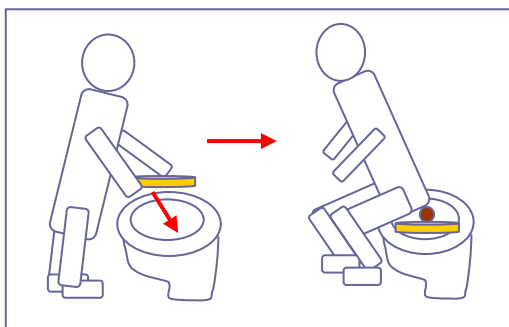
labor team w ag



1

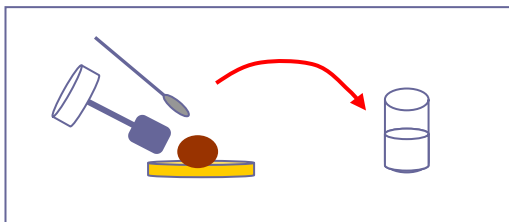
You received a tube with blue cap, as well as one with red label and one with green label.

Do not decant the liquid in the tube with red or green label.



2

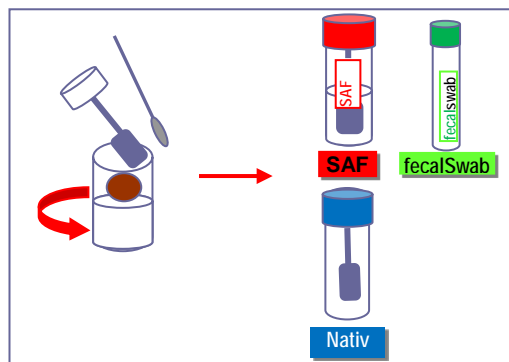
Pass stool into the collection tray (carton/plastic plate). Do not let urine or water from the toilet touch the stool specimen.



3

Open the collection tube. Using the spoon in the cap of the tube, pick up several portions of stool from contrasting areas in the tray. Be sure to collect any blood or pus and samples from areas of different colour or texture.

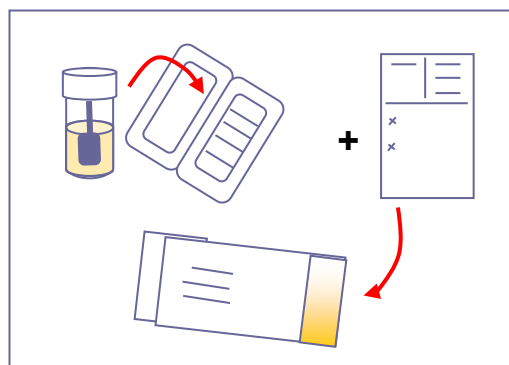
Unscrew tube with green lid, screw swab into stool until it's completely covered in sample material. Put swab back into tube and snap off at coloured markings.



4

Mix and mash the specimen with the contained liquid in the tube (tube with red or green label) until the sample is thoroughly mixed and is as smooth as possible.

Recap the tube and ensure it is securely capped (the spoon remains within).



5

Write your name and the date the specimen was collected on the tube label. Place your filled tube and the completed form which you received from your doctor in the bag. Seal the bag securely.

Post the bag. Do not throw the bag into the mailbox, but take it inside (changing temperatures could damage the sample).

